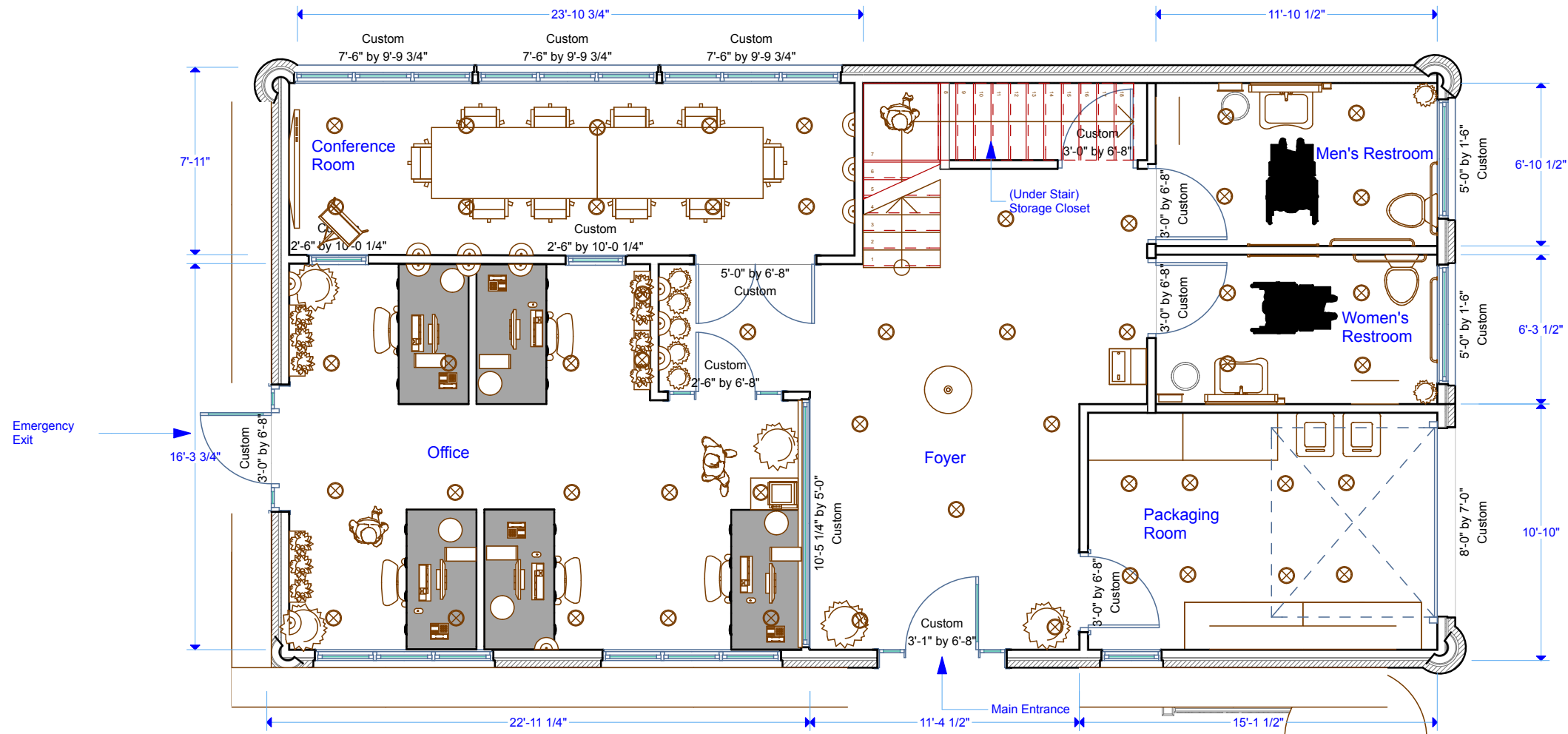


# Level 1



**M. Rosemarin Design and Architecture**  
 400 Blue Ash Drive  
 Buffalo Grove, IL, 60089

**Bathroom Plan**  
**Art Gallery**  
 Corner of Arlington Heights Road & IL Rt. 83  
 Buffalo Grove, IL, 60089

"PAGE 3 of 4"  
 "SCALE"  
 1/2"=7'-10"  
 Meryl Rosemarin

**STEVENSON HIGH SCHOOL**  
 TECHNOLOGY EDUCATION DEPARTMENT  
 TECHNICAL DRAWING PROGRAM  
 ADVANCED TECHNICAL DRAWING

